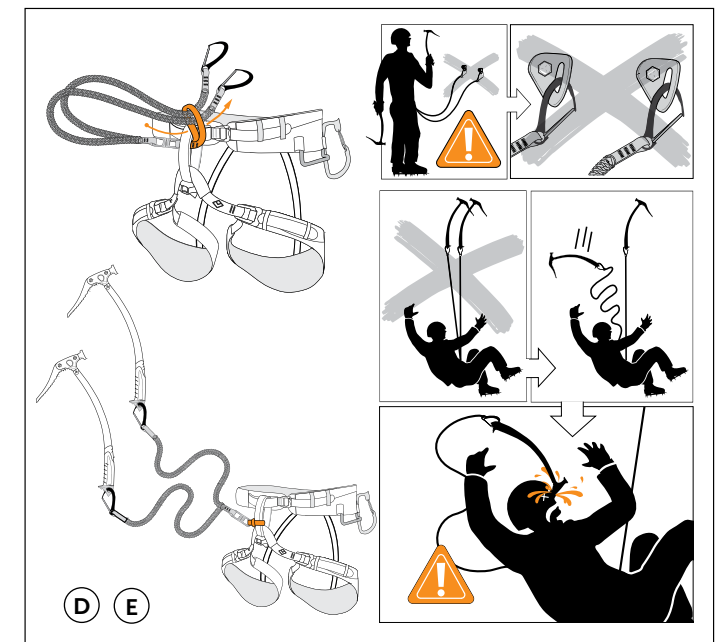
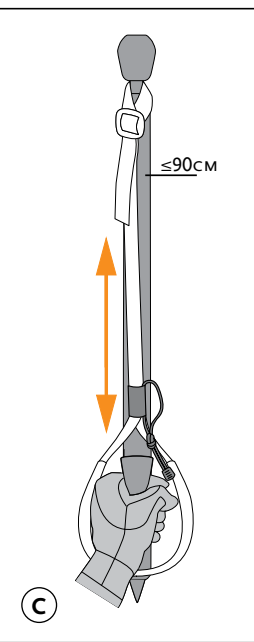
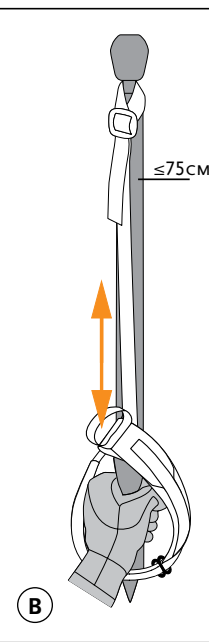
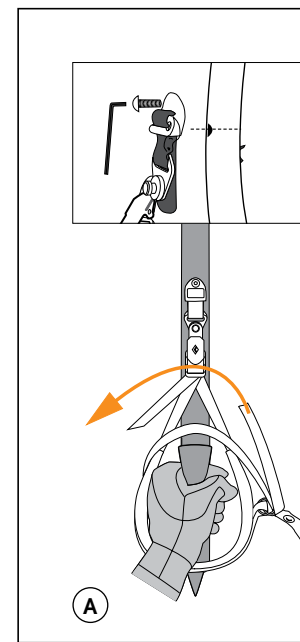
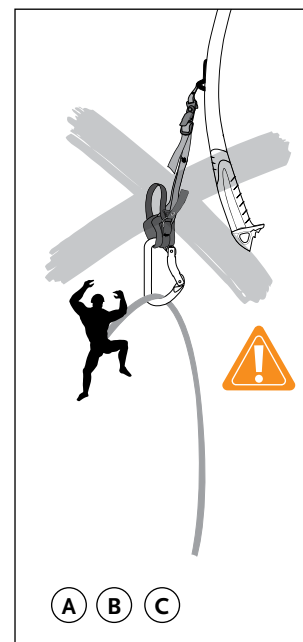
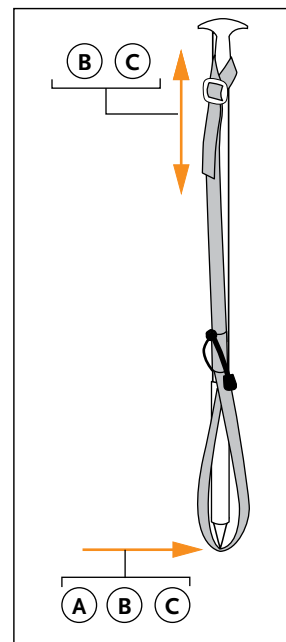
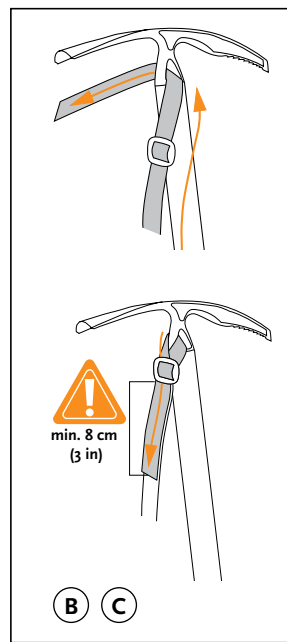
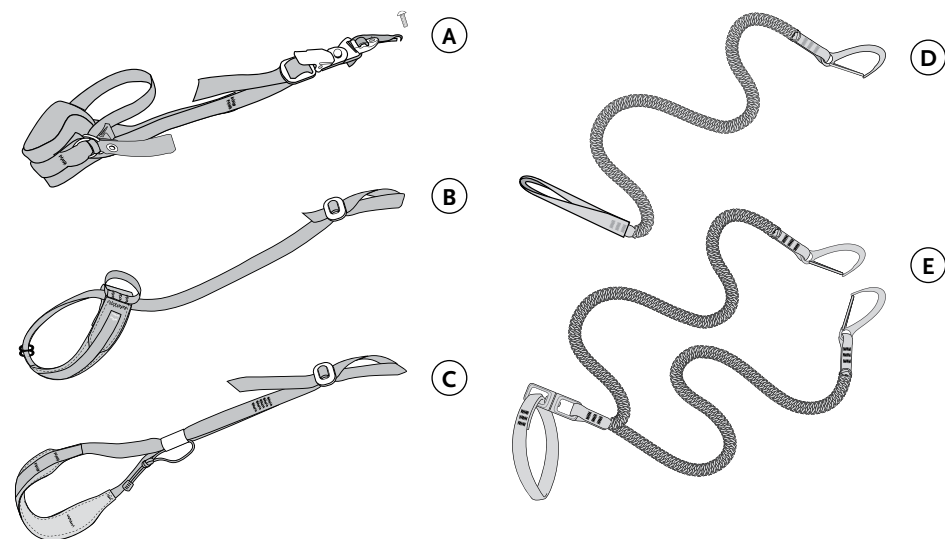


1 LEASHES

- A—Cobra/Viper Android
- B—Lockdown
- C—Slider
- D—Slinger
- E—Spinner



BlackDiamondEquipment.com

North America:
Black Diamond Equipment, Ltd.
2084 East 9000 South
Salt Lake City, UT 84124
Europe:
Black Diamond Equipment AG
Christoph Merian Ring 7
4153 Rematch, Switzerland
Asia:
Black Diamond Equipment Asia
No. 3 Liangfeng Road,
Zhuhai Free Trade Zone
Cangdong, P.R. China 519090

pick often.

Retire your leash immediately if:

- ◆ The buckle is cracked or bent.
- ◆ The webbing has any kind of rip or hole, is burnt, singed or melted, has torn threads or heavy abrasion, or is faded from exposure to ultraviolet light. Minor fuzzing of the webbing is not a cause for concern.

◆ The bar tacks are abraded or showing wear.

Retire your ice axe pick or adze immediately if:

- ◆ It is bent, cracked or deformed in any way or has been in hard service for more than a few seasons.
- ◆ The pick tip is excessively worn due to hitting rocks or repeated sharpening.

◆ The pick cannot be filed back to its original pick angle and shape.

Retire your crampon center bar immediately if:

- ◆ It is cracked, deformed or broken.

DO NOT modify your ice accessories except as shown in the instructions. Refer to your ice tool instructions for proper pick sharpening techniques. If a climbing component is worn but not obviously damaged it may still be ready for retirement. It is vitally important that your climbing equipment be sound. If you have any doubts about the dependability of a piece of gear, retire it and get a new one. Any time you retire a piece of gear, destroy it to prevent future use.

CLEANING

Wash in cold water with a mild soap. Do not use bleach or harsh detergents. Rinse well in clean water. Hang to dry, out of direct sunlight. Steel parts may be lightly oiled to reduce rusting.

STORAGE TIPS FOR ALL OF YOUR ICE ACCESSORIES

- ◆ Store all of your climbing equipment in a clean and dry environment, out of direct sunlight.
- ◆ Do not store gear near heat sources such as steam radiators or wood-burning stoves.
- ◆ Gear must not come into contact with corrosive materials like battery acid or solvents.
- ◆ Keep all leashes and sewn climbing equipment away from gnawing rodents and pets.

ADOPTION

We strongly discourage secondhand use. You must know the history of your equipment to be able to trust it.

Black Diamond Crampons conform to EN 893. Black Diamond Ice Tools conform to EN 13089.

MARKINGS (when present)

BLACK DIAMOND: Name of manufacturer

◆ Black Diamond's Logo

CE 0333: Monitoring of this PPE performed by AFNOR Certification, 11 rue Francis de Pressensé, 93571 La Plaine Saint Denis Cedex, France, NB No 0333.

Notified body performing the CE type examination: APAVE SUEUROPE SAS, BP 193 - 13322 MARSILLE CEDEX 16, France, NB No 0082.

DATE CODE: When present, the four digit date code 1234 would mean that a product was manufactured in 2011, on the 234th day of the year.

ⓘ: Instruction pictogram advising users to read the instructions and warnings.

Ⓢ: Indicates the ice tool and/or pick are certified as category Type 2, "intended for use on rock, and/or snow, and/or ice." Type 2 picks must pass higher strength requirements and are more durable than Type 1 picks. Type 1 picks intended for climbing steep ice may have thinner cross sections to improve climbing performance, but they will also have a higher likelihood of bending or breaking during use. Insect steep ice Type 1 picks frequently.

LIMITED WARRANTY

We warrant for one year from purchase date and only to the original retail buyer (Buyer) that our products (Products) are free from defects in material and workmanship. For headlamps our warranty is for three years. If Buyer discovers a covered defect, Buyer should return the Product to the place of purchase. In the event that this is not possible, return the Product to us at the address provided. The Product will be repaired or replaced at our discretion. That is the extent of our liability under this Warranty and, upon expiration of the applicable warranty period, all such liability shall terminate. We reserve the right to require proof of purchase for all warranty claims.

Warranty Exclusions:

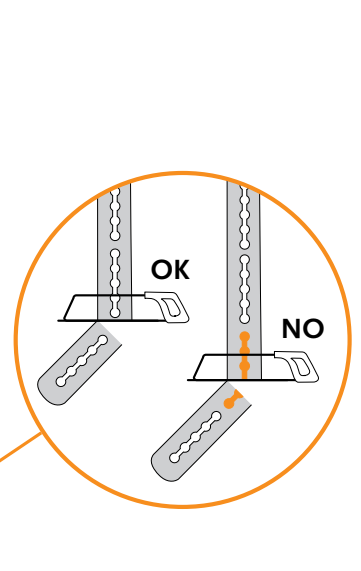
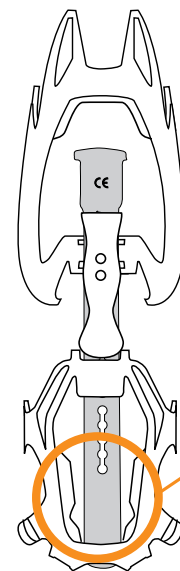
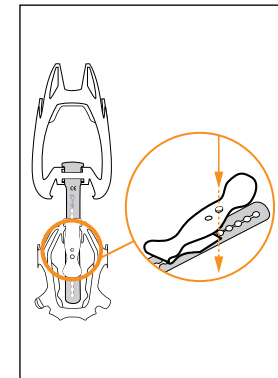
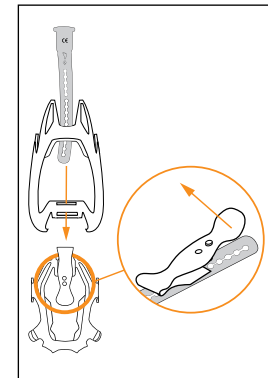
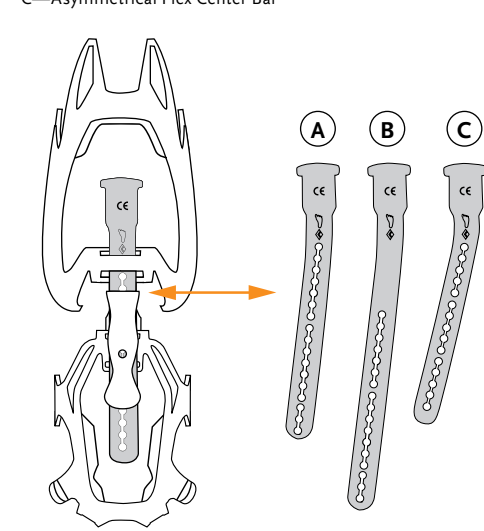
We do not warranty Products against normal wear and tear (such as ski edge cuts and abrasions, outsole wear, etc.), unauthorized modifications or alterations, improper use, improper maintenance, accident, misuse, negligence, damage, or if the Product is used for a purpose for which it was not designed. This Warranty gives you specific rights, and you may also have other rights which vary from state to state. Except for expressly stated in this Warranty, we shall not be liable for direct, indirect, incidental, or other types of damages arising out of, or resulting from the use of Product. This Warranty is in lieu of all other warranties, express or implied, including, but not limited to, implied warranties of merchantability or fitness for a particular purpose (some states do not allow the exclusion or limitation of incidental or consequential damages or allow limitations on the duration of an implied warranty, so the above exclusions may not apply to you).

ICE TOOL ACCESSORY COMPATIBILITY CHART

ACCESSORIES	ICE TOOLS					
	FUEL	FUSION	COBRA	VIPER	VENOM	RAVEN
Cobra/Viper Android Leash			○	○		
Lockdown Leash	○	○	○	○	○	○
Slider Leash	○	○	○	○	○	○
Fusion Pick	○	○	○	○		
Fusion Ice Pick	○	○	○	○		
Laser Pick	○	○	○	○		
Titan Pick	○	○	○	○		
Venom Tech Pick					○	
Venom Classic Pick					○	
Micro Hammer			○			
Micro Adze			○			
Standard Hammer			○			
Standard Adze			○			
Alpine Hammer				○		
Alpine Adze				○		
Bolt and Wrench Kit	○	○	○	○		
Venom Bolt and Wrench Kit					○	

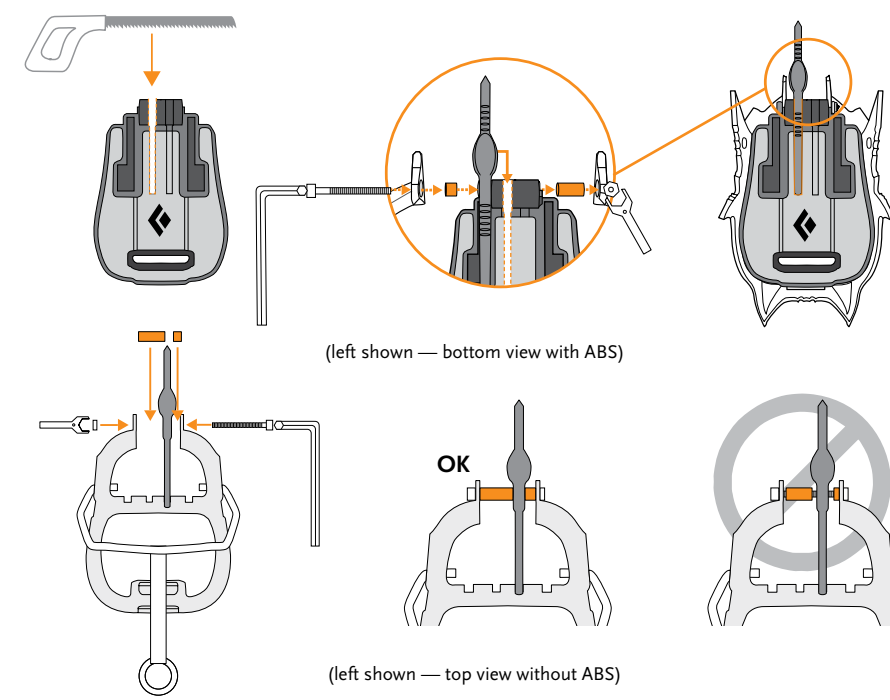
4 CENTER BARS

- A—Standard Flex Center Bar
- B—Long Flex Center Bar
- C—Asymmetric Flex Center Bar



5 CYBORG/STINGER

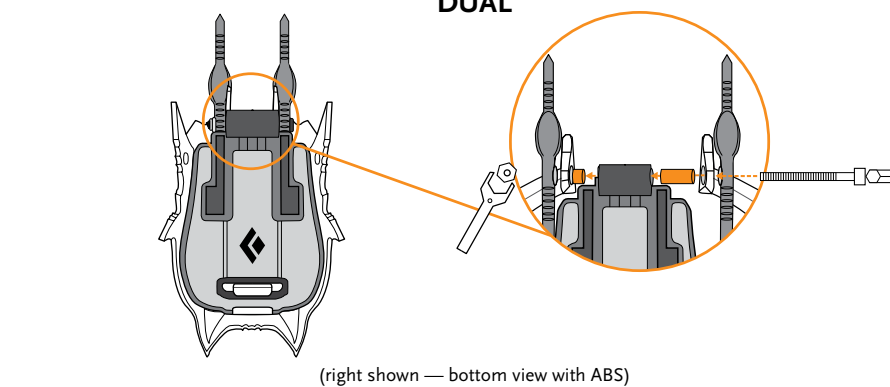
MONO



(left shown — bottom view with ABS)

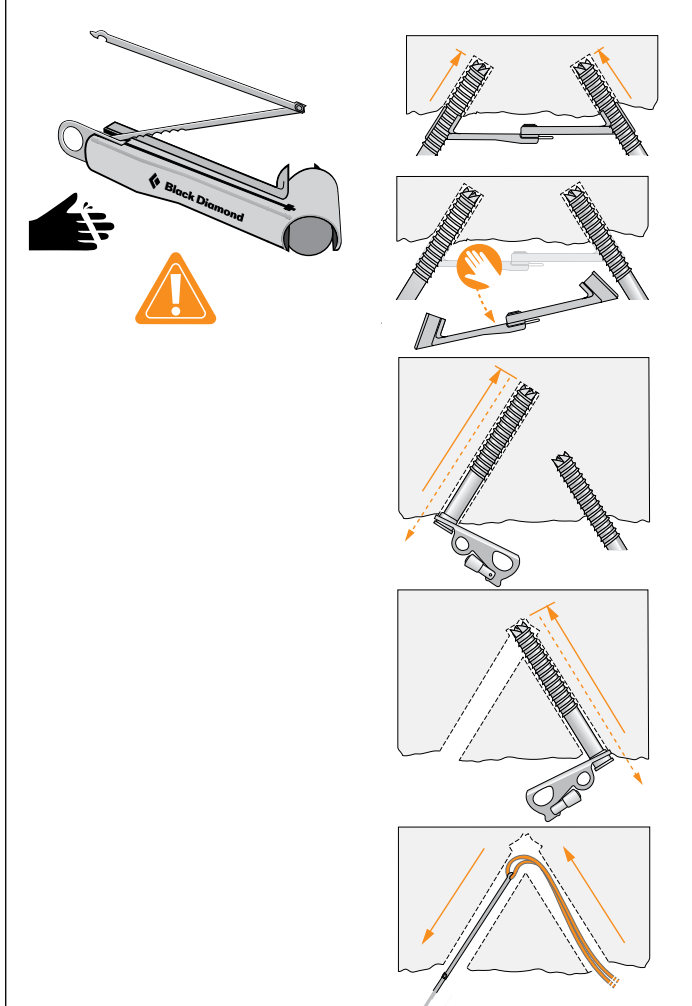
(left shown — top view without ABS)

DUAL

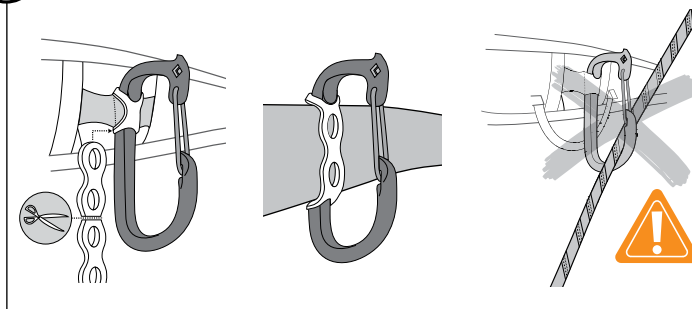


(right shown — bottom view with ABS)

6 FIRST SHOT



7 ICE CLIPPER



ENGLISH
INSTRUCTIONS FOR USE

WARNING

For climbing and mountaineering only. Climbing and mountaineering are dangerous. Understand and accept the risks involved before participating. Minors and others not able to assume this responsibility must be under the direct control of an experienced and responsible person. You are responsible for your own actions and decisions. Before using this product, read and understand all instructions and warnings that accompany it and familiarize yourself with its proper use, capabilities and limitations. Seek qualified instruction. Contact Black Diamond if you are uncertain about how to use this product. Do not modify this product in any way. Failure to read and follow these warnings can result in severe injury or death!

ICE ACCESSORIES MOUNTING AND ADJUSTMENT INSTRUCTIONS

LEASHES (Illustration 1)

1. It is best to position the buckle (Slider and Lockdown Leashes) as high as possible against the head of the tool. That way the loop of webbing that goes through the head hole cannot flip up and over a hammer or adze.
 2. Tighten the buckle under body weight.
 3. Cut off the excess webbing at an angle, leaving at least an 8 cm (3 in) tail, and singe the trimmed end carefully to prevent fraying.
- ◆ **NOTE:** Inspect all of the Android Leash's thumb lever assembly before each use and make sure the thumb lever is parallel to the leash tab. This will ensure that the leash tab engages and disengages the stud correctly and minimizes the possibility of the leash disengaging inadvertently.
- ◆ When not using an Android Leash on your Cobra or Viper ice tool, ensure that the hole is plugged with the bolt.

WARNING: Leashes are intended to support body weight only. In the event of a shock load, your leash will not stretch. Even a short fall onto a leash can injure you and can potentially cause your leash or your placement to fail, resulting in serious injury or death.

PICKS (Illustration 2)

The Fusion, Fusion Ice, Laser and Titan Picks fit all of Black Diamond's modular ice axes except the Venom ice axe, which requires a Venom Pick. The Titan Pick is Black Diamond's most durable pick and is recommended for all-around use. The Laser Pick and Fusion Ice Pick excel on steep ice, and the Fusion Pick is intended for climbing steep terrain are less durable than Type 1 picks.

CENTER BARS (Illustration 4)

- ◆ Extra-long center bars are available for boots larger than size 46 (12).
 - ◆ Asymmetric center bars are available for boots with radically curved soles.
 - ◆ Flexible center bars are available for all crampon styles.
- Not all center bars are compatible with all crampons. Check the chart for compatibility and availability of replacement parts.

FIRST SHOT (Illustration 6)

WARNING: The condition of the ice will determine the placement's overall strength and reliability. Avoid placing ice anchors in soft, aerated or fractured ice. Be aware that a lessening of the force needed to turn a screw as it goes in can indicate an air pocket inside the ice and necessitate moving the screw to a better location.

INSPECTION AND RETIREMENT

We recommend that you inspect your climbing gear before and after each use for signs of damage and wear. Inspect your ice axe

